

CERKAMED



MEDICAL COMPANY



Brand created for specialists!



Made in Poland

About us

Polish

PRODUCTION



CERKAMED

We are **Polish producer** of dental materials



Products with

PASSION

We are constantly **expanding our offer**
listening to the needs
of the patients and the dentists



Innovation and

MODERN TECHNOLOGY

Creating **innovative products**
we use **the latest technology**



Highest

QUALITY

The quality of our products is confirmed with many **patents and certificates**



Products registered and certified in several dozen countries **of Europe, Asia, Africa and South America**



Unique

DESIGN

Not only quality and price
but also
unique design
makes our products special



CERKAMED
Medical Company

PRODUCENT MATERIAŁÓW STOMATOLOGICZNYCH

CERKAMED, ul. Kwiatkowskiego 1, 37-450 Stalowa Wola, Polska
tel./fax: 15 842 35 85, tel.: 15 841 64 33, 15 813 50 15
e-mail: biuro@cerkamed.pl

CERKAMED.pl

Customer

TRUST

Thousands of **satisfied**
customers all over the
world



Products sold to over
70 countries!



Cerkamed Team



Available packages:
-bottle of 200 g
-bottle of 400 g

use with: ENDO-PREP CREAM

CHLORAXID

LIQUID for root canals rinsing
Sodium hypochlorite 2% or 5,25% in liquid



Available packages:
-bottle of 200 g
-bottle of 400 g

use with: ENDO-PREP CREAM

CHLORAXID EXTRA

LIQUID for root canals rinsing
Sodium hypochlorite 2% or 5,25% in liquid + surfactants



CHLORAXID GEL

Preparation for root canals rinsing
Sodium hypochlorite 2% or 5,25% in gel



Available package:
- syringe 2 ml

Available package:
- syringe 2 ml

CHLORAXID GEL EXTRA

Preparation for root canals rinsing
Sodium hypochlorite 2% or 5,25% in gel + surfactants





Available packages:
- syringe of 2 ml, 5 ml, 10 ml
- MEGA PACK – 3 x syringe 10 ml

! recommended to use with liquids from CHLORAXID line

ENDO-PREP CREAM

◇ CREAM for root canals preparation
EDTA 15% in cream, urea peroxide

ECONOMIC package!



Available packages:
- bottle of 50 ml, 120 ml, 200 g

ENDO-SOLUTION

◇ LIQUID for root canals widening
EDTA 17% in liquid





Available packages:
- syringe of 2 ml, 5 ml, 10 ml

ENDO-PREP GEL

▲ GEL for root canals preparation
EDTA 17% in gel



DLSTM
DISPENSER LABELLING SYSTEM



Available package:
- bottle of 120 ml

ENDO-SOLUTION PREMIUM

▲ LIQUID for root canals widening
EDTA 17% in liquid + surfactants



Safety™
Adapter
System

Available packages:
- bottle of 200 g
- bottle of 400 g

use with: HYDROCAL

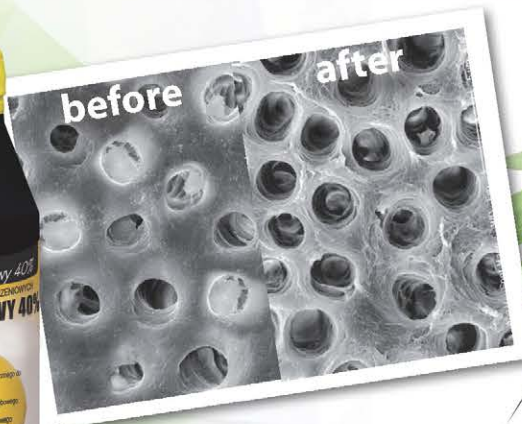


GLUCO-CHEX 2%

LIQUID for root canals rinsing
Chlorhexidine digluconate 2% In liquid



Safety™
Adapter
System



Available packages:
- bottle of 200 g
- bottle of 400 g

CITRIC ACID 40%

LIQUID for root canals rinsing



Safety™
Adapter
System

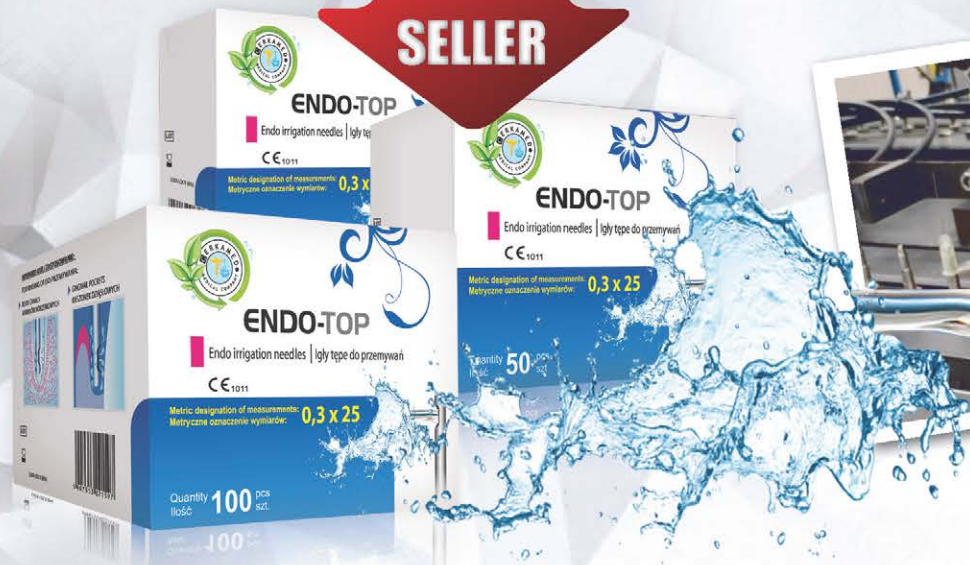


Available packages:
- bottle of 200 g

ISOPROPYL ALCOHOL



BEST SELLER



Available packages:
- 100 pcs., 50 pcs., 20 pcs.

ENDO-TOP ▲ Endo irrigation needles

DLS™
DISPENSER LABELLING SYSTEM



Available for products:
CHLORAXID 2% EXTRA,
CHLORAXID 5,25% EXTRA,
CHLORAXID 2%,
CHLORAXID 5,25%,
GLUCO-CHEX 2%,
ENDO-SOLUTION,
ENDO-SOLUTION PREMIUM,
CITRIC ACID 40%



ENDO-PACK ▲ LABELLED luer lock dispensers of 5 ml - 20 pcs



Available for products:
CHLORAXID 2% EXTRA,
CHLORAXID 5,25% EXTRA,
CHLORAXID 2%,
CHLORAXID 5,25%,
GLUCO-CHEX 2%,
ENDO-SOLUTION,
ENDO-SOLUTION PREMIUM,
CITRIC ACID 40%

20 x + 20 x

ENDO-SET ▲ LABELLED luer lock dispensers of 5 ml - 20 pcs + 20 pcs of endo irrigation needles ENDO-TOP



Available packages:
- syringe of 2,1 g
- MEGA PACK – 4 x syringe 2,1 g

CALCIPAST

▲ Calcium hydroxide paste
Calcium hydroxide



Available packages:
- syringe of 2,1 g
- MEGA PACK – 4 x syringe 2,1 g

CALCIPAST+I

▲ Calcium hydroxide in paste with iodoform
Calcium hydroxide, iodoform



Available package:
- bottle of 45 ml

CANAL CLEAN

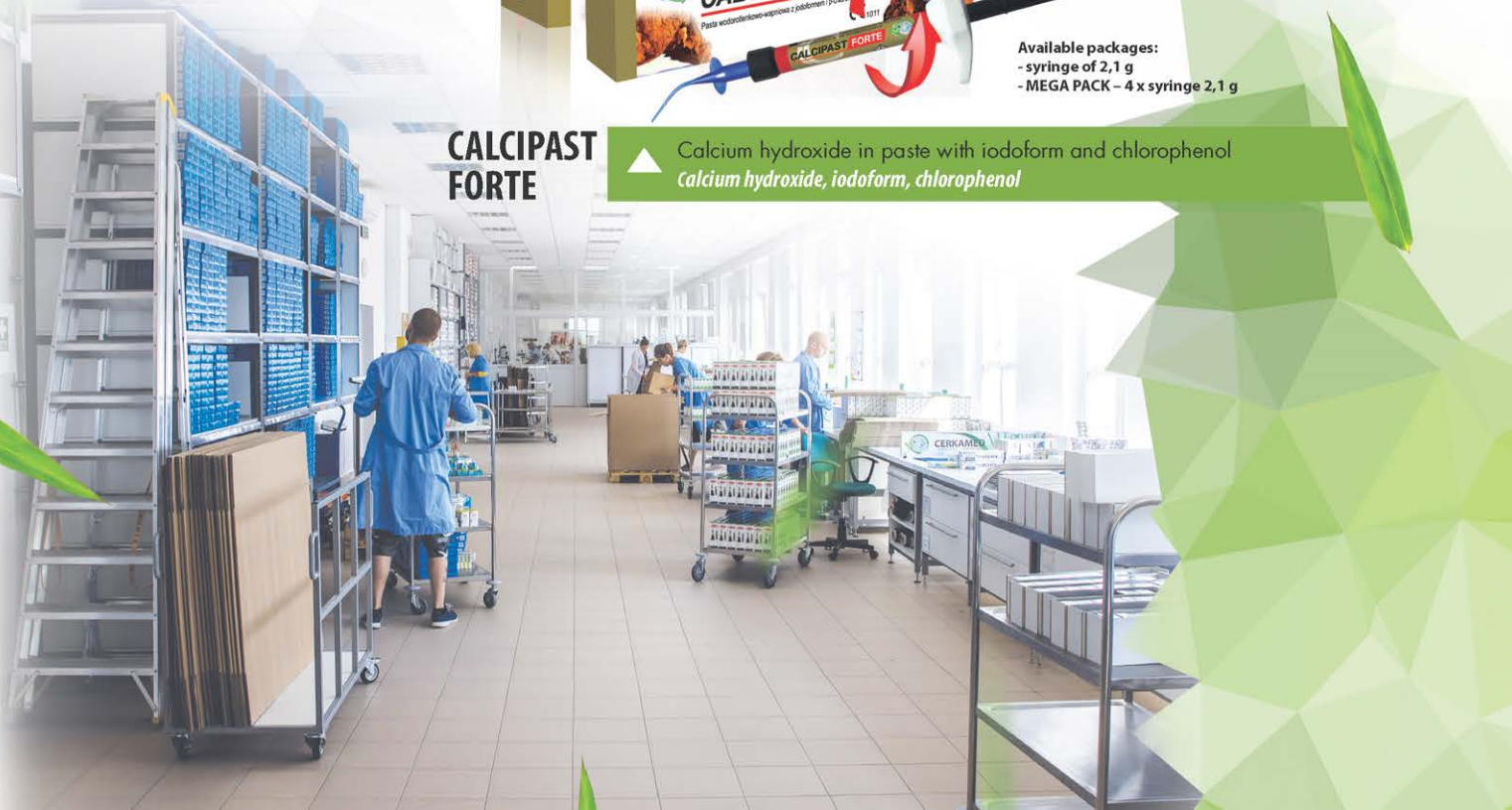
▲ LIQUID for root canals rinsing and drying
Isopropyl alcohol, acetone



Available packages:
- syringe of 2,1 g
- MEGA PACK – 4 x syringe 2,1 g

CALCIPAST FORTE

▲ Calcium hydroxide in paste with iodoform and chlorophenol
Calcium hydroxide, iodoform, chlorophenol





Available packages:
- syringe of 5 ml or 10 ml

GLUCO-CHEX 2% GEL

▲ Gel for root canals preparation
Chlorhexidine digluconate 2%



Available package:
- container of 10 g

HYDROCAL

▲ Calcium hydroxide



Available package:
- container of 30 g

IODOFORM

▲ Iodoform pure p.a.

The best in the world!



short setting time

plasticity



BIO MTA+ mini

Available packages:
- MINI 3 x 0,14 g BIO MTA+ powder, 1 ml of BIO MTA+ liquid

BIO MTA+ standard

Available packages:
- STANDARD 6 x 0,14 g BIO MTA+ powder, 1 ml of BIO MTA+ liquid

BIO MTA+ maxi

Available packages:
- MAXI 10 x 0,14 g BIO MTA+ powder, 2 x 1 ml of BIO MTA+ liquid

BIO MTA+ pro

Available packages:
- PRO 10 x 0,14 g BIO MTA+ powder, 2 x 1 ml of BIO MTA+ liquid, MATRIX MTA+

biocompatibility

strength

BIO MTA+

▲ Biomaterial for filling and rebuilding of root canals



MTA+ mini

Available packages:
- 3 x 0,14 g MTA+ powder, 1 ml liquid

MTA+ standard

Available packages:
- 6 x 0,14 g MTA+ powder, 1 ml liquid

MTA+ maxi

Available packages:
- 10 x 0,14 g MTA+ powder, 1 ml liquid

MTA+ pro

Available packages:
- 10 x 0,14 g MTA+ powder, 1 ml liquid, MATRIX MTA+

MTA+

▲ Material for filling and rebuilding of root canals

New!



Possible variants:
 - MTA+ Aplikator Premium – bent 0,8 mm
 - MTA+ Aplikator Premium – bent 1,2 mm
 - MTA+ Aplikator Premium – straight 0,8 mm
 - MTA+ Aplikator Premium – straight 1,2 mm

MTA+ APPLICATOR PREMIUM

▶ Reusable dental tools for handling and application of prepared measure of MTA+ material



Possible variants:
 - inner dimension of the piston 0,8 mm
 - inner dimension of the piston 1,2 mm

MTA+ APLICATOR

▶ Reusable dental tools for handling and application of prepared measure of MTA+ material



DENTAL TOOLS FOR HANDLING AND APPLICATION OF MTA+

▶ Reusable dental tools for handling and application of prepared measure of MTA+ material.



MATRIX MTA+

▶ Dosing block MTA+



★ SYNTEX ★

- A REAL KING AMONG ALL THE SEALERS



Available package:
- syringe of 10 g of the preparation
+ mixing tips
+ mixing papers



SYNTEX

▲ Root canals filling and sealing material

Color chart and sizes:

08	10	15	45	90	2%, 4%, 6%, ProTaper			
20	50	100	25	55	110	F1	F2	
30	60	120	35	70	130	F3	F4	
40	80	140	40	80	140	F5		

HAND ROLLED

excellent quality

full range of sizes

useful round package



GUTTA PERCHA POINTS

▲

New!



GUTTA PERCHA PLUGGER

▲ Reusable dental tool for vertical condensation of gutta-percha

Available package:
bottle of 10 ml



EUCALYPTOL

▲ Oil for dissolving gutta-percha *Eucalyptus oil 100%*



New!

Available package:
bottle of 10 ml



ORANGE GUTTANE

▲ Oil for dissolving gutta-percha *Orange oil 100%*

Color chart and sizes:

08	10	2%, 4%, 6%, ProTaper	
15	45	90	
20	50	100	
25	55	110	
30	60	120	F1
35	70	130	F2
40	80	140	F3
			F4
			F5

Available package:
bottle of 10 ml



METHYLENE CHLORIDE

▲ *Dichloromethane pure p.a.*



ABSORBENT PAPER POINTS

▲



ENDO-ASPIRATOR

▲ for removal liquids from the root canal by aspirating



New!



Available packages:
syringe 2 ml, 10 ml, 50 ml
MEGA PACK 3 x 10 ml
MONSTER PACK: 10 x 2 ml



Available packages:
syringe 2 ml, 10 ml, 50 ml
MONSTER PACK: 10 x 2 ml

Choose the one according to your preferences

BLUE ETCH

▲ Dental etchant
O-phosphoric acid 36%

BLUE ETCH FLOW

▲ Flowable dental etchant
O-phosphoric acid 36%



Available packages:
YELLOW PORCELAIN ETCH syringe 2 ml
+ SILAN syringe 2 ml



SET: YELLOW PORCELAIN ETCH + SILANE

▲ Hydrofluoric acid 9,5%, methacrylic silane



YELLOW PORCELAIN ETCH

Available packages:
syringe 2 ml

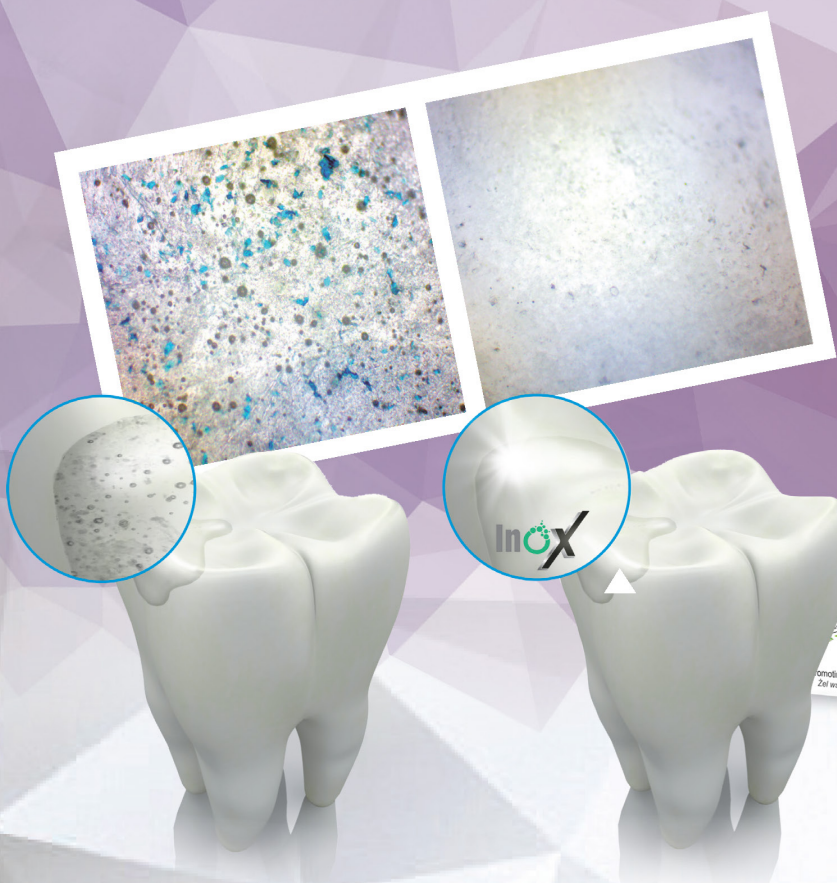
▲ Porcelain etch Hydrofluoric acid 9,5%



SILANE

Available packages:
syringe 2 ml

▲ Methacrylic silane



Available packages:
 - 2 ml syringe + applicators
 - Mega Pack 4 x 2 ml syringe + applicators

STOPS
 Inhibition



INOX

Gel promoting complete polymerisation of dental composites
 propanetriol (glycerol), Ph Eur purified water, gel base



SPECIAL
 Gift



Available packs:
 - PLS mini:
 3 x 1 ml of preparation + set of applicators
 - PLS standard:
 6 x 1 ml of preparation + set of applicators
 - PLS maxi:
 10 x 1 ml of preparation + set of applicators



PROTECT LIGHT SEAL

▲ Dentine protective enamel 1% potassium fluoride (3500 ppm F⁻), HEMA



Available packages:
bottle of 10 g

ALUSTAT

▲ LIQUID for staunching the bleeding
Aluminium chloride 25%



Available packages:
syringe 5 ml, 10 ml
MEGA PACK 3 x 10 ml

ALUSTAT GEL

▲ GEL for staunching bleeding
Aluminium chloride 25%



Available packages:
syringe 0,8 g
MEGA PACK 4 x 0,8 g



ALUSTAT FOAM

▲ FOAM for staunching bleeding
Aluminium chloride 20%



Available packages:
dropping bottle 10 ml
+ applicators

TCA DENT

▲ Preparation for local cauterisation the mucous membrane

Trichloroacetic acid 35%

6 SIZES available:

- 000.0
- 000
- 1
- 0
- 00
- 2

000.0
Smallest
size
retraction cord
Available on the
market



**unique smooth
weave**

BEST-CORD NANO

▲ Knitted retraction cords

*254 cm
- the longest cord
on the market*

3 TYPES



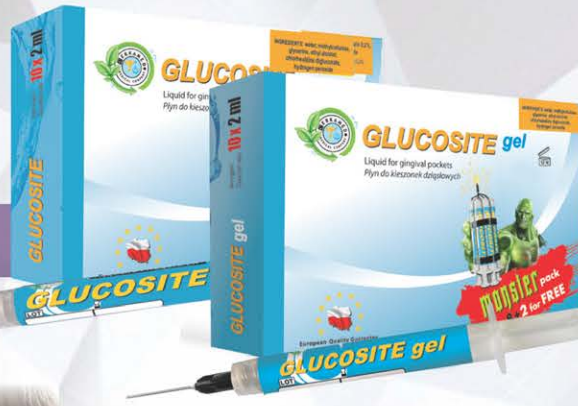
**RETRACTION CORD
PACKERS**

▲ Tools for packing retraction cords in the gingival pockets



GLUCOSITE

▶ LIQUID and GEL for gingival pockets
Chlorhexidine digluconate, hydrogen peroxide



Available packages:
syringe 2 ml
bottle of 50 ml
MONSTER pack: 10 x 2 ml

Available packages:
syringe 2 ml

Available packages:
syringe 2 ml



RED DETECTOR

▶ Caries detector
Rhodamine



CANAL DETECTOR

▶ Root canals orifices indicator
Methylene blue



Available packages:
bottle of 10 ml, 20 ml

EUGENOL

▶ Eugenol oil
Eugenol oil 100%



**Bonding
time 1-7 min.**



Available packages:
container of 50 g

ZINC OXIDE

▶ Powder for making pastes

ZINC OXIDE FAST

▶ Zinc oxide
- fast setting formula



Two variants available:

- **mint**
- **original**

Available packages:

- Start Pack concentrate in syringe 50 ml
- + bottle
- + dispenser
- concentrate in syringe 50 ml



DENT FRESH

▲ Specialised Mouthwash

Pulp
SPRAY



Aroma:

- **mint**
- **orange**

Available packages:
- spray 200 ml

PULP SPRAY

▲ SPRAY for pulp vitality testing

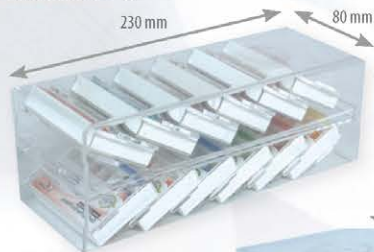
ENDO-STATION GO

ENDO-STATION GO

Line of endodontic organizers



ENDO-STATION GO GUTTA BOX 2X6



ENDO-STATION GO GUTTA BOX 2X3



ENDO-STATION GO GUTTA BOX 12



ENDO-STATION GO available in colors:*

- green ● blue ● yellow ● orange ●
- orange neon ● transparent ○

* ENDO-STATION GO GUTTA BOX available only transparent

ADDITIONAL ACCESSORIES

Available packages:

- 1. ELASTIC APPLICATORS 10 pcs or 20 pcs
- 2. GEL APPLICATORS 20 pcs or 50 pcs
- 3. BRUSH APPLICATORS 10 pcs or 20 pcs
- 4. APPLICATORS FOR ALUSTAT FOAM 10 pcs
- 5. APPLICATORS FOR SYNTEX (mixing tips) 5 pcs
- 6. PAPER FOR PRODUCT MIXING 30 pcs
- 7. APPLICATION PIPETTES 5 pcs



1



2



3



4



5



6



7



Available variants:

- plain BLUE: medium 0,18 mm or heavy 0,22 mm
- mint GREEN: medium 0,18 mm or heavy 0,22 mm
- mint BLACK: medium 0,18 mm

Available package:
36 pcs.



RUBBER DAM

▲ Dental RUBBER-DAM



RUBBER DAM TEMPLATE

▲ RUBBER-DAM Template



RUBBER-DAM NAPKINS

▲ RUBBER-DAM Template

Available package:
20 pcs. and 36 pcs.

Available packages:
syringe of 2ml
MEGA PACK 4 x 1,2ml



RUBBER-DAM LIQUID

▲ Light-Cured RUBBER-DAM liquid



3 SIZES: fine, medium, thick



Package containing 1,2 m of rubber

RUBBER-DAM CORD

▲ Dental dam stabilizing cord

- Set available:
- rubber dam punch
 - clamps forceps
 - rubber dam frames (3 size)
 - the set of clamps
 - base for clamps

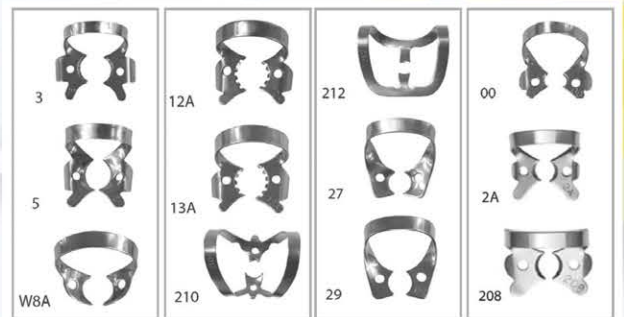
each item of Rubber dam Set available

separately!

12 types clamps
Also available in satin and black version



- Flat jaws for small lower molars (No 3).
- Festooned wings for large upper molars.
- Wings fit the gum curvature (No 5).
- Festooned jaws for molar's roots (No W8A).
- Serrated jaws for lower right and upper left molars (No 12A).
- Serrated jaws for lower left and upper right molars (No 13A).
- Small and large jaw for anteriors (No 210).
- Flat jaws for anteriors (No 212).
- Rounded jaws for premolars (No 27).
- Rounded and flat jaws for premolars (No 29).
- Small jaws and high bow for anteriors and premolars (No 00).
- Wings, flat and large jaws for premolars (No 2A).
- Festooned wings, flat jaws for large premolars (No 208).



RUBBER DAM SET

▲ Tools for rubber dam

Perfect picture

75
pcs.
Anti-reflex

- universal
- single use
- flexible



DENTAL CONTRASTOR

▲



Perfect protection!





Packing includes 20 pcs of disposable pads

ONE SIZE



PROTECTIVE PADS FOR A PATIENT

Available colours:

- green 
- blue 
- pink 
- beige 
- white 
- transparent 



PROTECTIVE SHIELDS FOR A PATIENTS

- ✓ Plaque removal
- ✓ Gum massage
- ✓ Soft and flexible
- ✓ Reusable





12 pcs.

SIMPLY TRAVEL SILICONE FLOSS

▲ Silicone dental floss

Available colours:

- green 
- blue 
- pink 
- beige 
- white 
- transparent 

COMFORT
with set of foils

COMFORT LIGHT
with set of foils

Available packages:
- standard 5 pcs.
- relax 4 pcs.
- relax light 4 pcs.

PROTECTIVE VISORS

PROTECTIVE VISORS
ATTACHED TO GLASSES

SET of removable protective foils

ANTISTATIC FOILS

- ★ anti-fog effect
- ★ cleans
- ★ protects

Available packages:
- spray 30 ml



3 in 1

FOG
BUSTER

for Protective Visor



GLASSES FOR POLYMERIZATION





- orange
- blue
- pink
- yellow
- green
- purple



Available packages:
 - 6 x syringe 1 g (colour: orange, blue, pink, yellow, green, purple) + applicators
 - syringe 1 g (chosen colour) + applicators

Colourful way to a healthy smile!

RAINBOW FLOW

▲ Flowable composite

colour palette for kids



3D stickers





- Available packs:
- FLUOR DEFENDER mini:
3 x 1 ml of preparation + set of applicators
 - FLUOR DEFENDER standard:
6 x 1 ml of preparation + set of applicators
 - FLUOR DEFENDER maxi:
10 x 1 ml of preparation + set of applicators

FLUOR DEFENDER

▲ Protective enamel with fluoride for children
0,1% fluorosilane (1600 ppm F⁻), HEMA

hand puppet
for the youngest patients

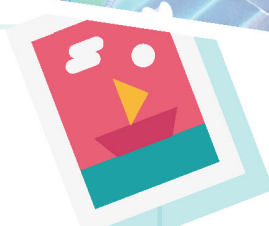


Available packages:
1 pcs., 2 pcs. or 3 pcs.

leaflet
„ROOT CANAL
TREATMENT”



Available packages:
20 pcs., 50 pcs. or 100 pcs.



Certificate of Bravery

Available package:
MIX - 20 pcs.



New! →

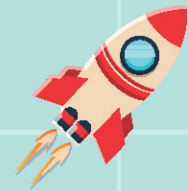
Boxes for milk teeth

Available package:
5 pcs.





Bracelet



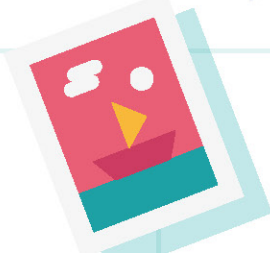
Guessing games
for brave
little patients

My teeth brushing
calendar

Available package:
MIX - 20 pcs.



New!





Buy set of **24 boxes** of mouthwash and you will get

a **JUTE BAG AND A DEDICATED CUP**

GREEN DENT THERAPY

Herbal mouth therapy guaranteed by leading company in dentistry

New!



SPECIAL GIFT!

Set contains 24 boxes of mouthwash
- 3 pieces of each kind

the greatest expert of herbal medicine



Mateusz Senderski MSc Eng.
selector of GREEN DENT THERAPY herbs,
author of 8 handbooks about herbal medicine

Use herbs!





Relief

Supports healing after dental treatments

Characteristics:

Composition of 8 herbs soothing, calming irritations and breath refreshing. Recommended to be used alternatively after dental treatment and in case of bad breath (halitosis).

Composition:

mint leaf, alchemilla, chicory roots, chamomile flower, sage, hartsease, iceland lichen, hemp-nettle herb.



Hemostatic

Reducing gums bleeding

Characteristics:

Composition of 8 herbs with astringent and soothing properties. Recommended to aid treatment for reducing gums bleeding.

Composition:

oak bark, sage, chamomile flower, marigold blossom, capsella, clayweed leaf, yellow sweet clover herb, hemp-nettle herb.



Sept

Soothing mouth inflammation

Characteristics:

Composition of 14 herbs with soothing and astringent properties. Recommended to be used alternatively in case of trush, mouth inflammation and purulent gum inflammations.

Composition:

sage, hyssop, achillea, thyme, marjoram, common toad flox, narrowleaf plantain, alchemilla, marigold blossom, chamomile flower, eyebright, peppermint, oak bark, iceland lichen.



Scaling

Soothing ailments after scaling

Characteristics:

Composition of 8 herbs with soothing and calming properties. Recommended to be used in case of after scaling conditions and to prevents dental plaque build up.

Composition:

horse chestnut, oak bark, hernaria glabra, root of common chicory, chickweed, archangel, clayweed leaf, raspberry leaf.



Gum

Soothing inflamed gums

Characteristics:

Composition of 8 herbs with astringent and soothing properties. Recommended to aid treatment in case of inflamed gums.

Composition:

sage, cornflower, knapweed, clayweed leaf, rubus leaf, artcium root, althea, achillea, marigold blossom.



Fresh

Soothing halitosis

Characteristics:

Composition of 8 herbs soothing and calming irritations and breath refreshing. Recommended to be used alternatively in case of bad breath (halitosis) as also after dental treatments

Composition:

peppermint, lavender flower, anise fruit, sage, hyssop herb, coriander fruit, hartsease, clayweed leaf.



Prosthesis

For persons wearing dentures

Characteristics:

Composition of 10 herbs with soothing and refreshing properties. Recommended to be used alternatively in case of wearing dentures conditions.

Composition:

thyme, sage, alchemilla, herba herniariae, althea, calamus, smartweed, clayweed leaf, great mullein, tilia platyphyllos.



Aphtea Stop

Supports healing of aphtha

Characteristics:

Composition of 8 herbs with astringent and soothing properties. Recommended to aid treatment of aphtha.

Composition:

licorice, chamomile flower, lemon balm, alchemilla, flower of calendula, chicory roots, iceland lichen, sage.



ENDO REMOVAL SYSTEM

by K. Gonczowski

Set of endodontic micro instruments for removing broken canal instruments



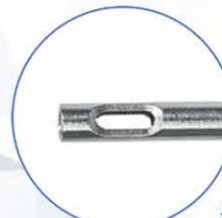
TOOLS AVAILABLE SEPARATELY OR IN PARTICULAR SETS:



■ 018-180
Endodontic micro forceps 0.8 mm



■ 118-180
Endodontic micro forceps 1,2 mm



■ 218-180
Endodontic micro forceps with a movable wedge



■ 015-195
Endodontic micro probe - bent



■ 015-205
Endodontic micro probe - straight



■ 118-125
Endodontic forceps



■ 017-008
Endodontic micro lever



■ 016-002
Endodontic inwards micro chisel



■ 016-001
Endodontic outwards micro chisel



■ 130-130
Endodontic micro tweezers





NOTICE! ALL TRADEMARKS ARE THE PROPERTY OF CERKAMED COMPANY.
THIS INFORMATION IS ONLY COMMERCIAL INFORMATION AND IS NOT AN OFFER WITHIN THE MEANING OF THE CIVIL CODE.

1 Join us on facebook
facebook
#cerkamed

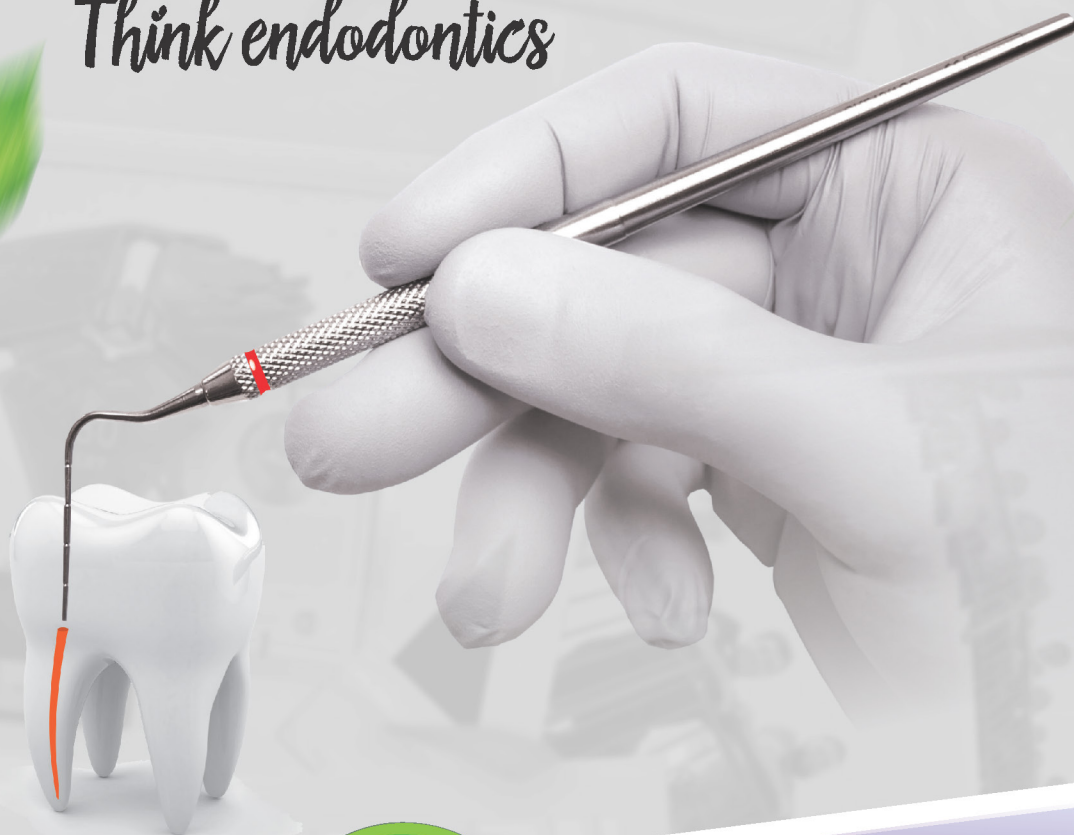


Instagram

#cerkamed



Think endodontics



~ say Cerkamed!

PPH CERKAMED
Wojciech Pawłowski

NIP: PL 865-204-87-70
REGON: 431162810

ul. Kwiatkowskiego 1, 37-450 Stalowa Wola, woj. podkarpackie, Poland

Trade department: Phone: +48 15 840 08 09
Phone: +48 15 842 35 85, int. 809
Mobile: 601 278 010

e-mail: export@cerkamed.pl



www.cerkamed.com